



## 2 Meridian Court

Ashford, TN23 5UZ

Price £215,000

An immaculately presented bungalow in a small retirement complex conveniently situated for the Singleton Centre with its doctors surgery and local shops. The tastefully decorated accommodation comprises an entrance hall, lounge, kitchen, two bedrooms and shower room/WC. Well maintained communal gardens surround the property providing a peaceful setting with convenient, covered residents parking.

NO ONWARD CHAIN

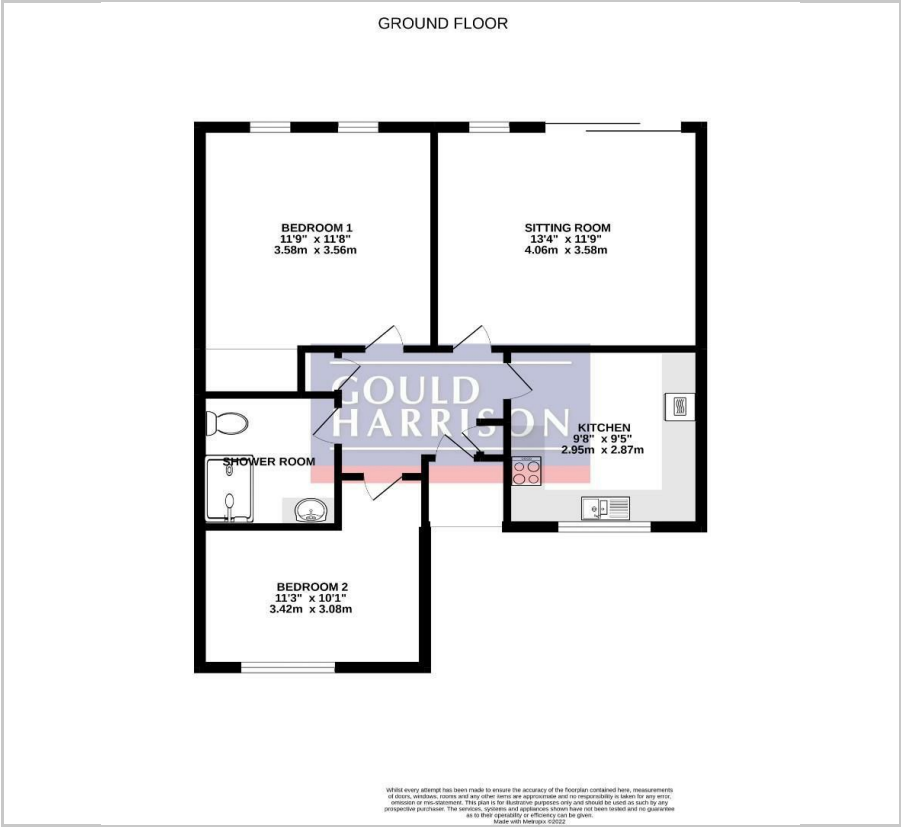
- VERY WELL PRESENTED BUNGALOW
- POPULAR RETIREMENT COMPLEX
- TWO BEDROOMS
- MODERN KITCHEN & SHOWER ROOM
- WELL MAINTAINED COMMUNAL GARDENS
- DOUBLE GLAZING
- RESIDENTS PARKING
- LEASEHOLD - BALANCE OF 99 YEARS FROM 1984
- MANAGEMENT CHARGE: £253.07 pcm
- NO ONWARD CHAIN

### Viewing

Please contact our Ashford Office on 01233 646411 if you wish to arrange a viewing appointment for this property or require further information.



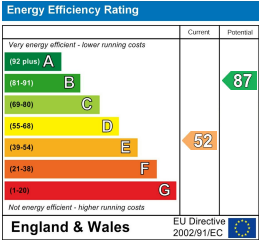
Floor Plan



Area Map



Energy Efficiency Graph



These particulars, whilst believed to be accurate are set out as a general outline only for guidance and do not constitute any part of an offer or contract. Intending purchasers should not rely on them as statements of representation of fact, but must satisfy themselves by inspection or otherwise as to their accuracy. No person in this firms employment has the authority to make or give any representation or warranty in respect of the property.